



Troisième atelier des contributeurs 30 - 31 mai 2013 – MAEE (Paris)

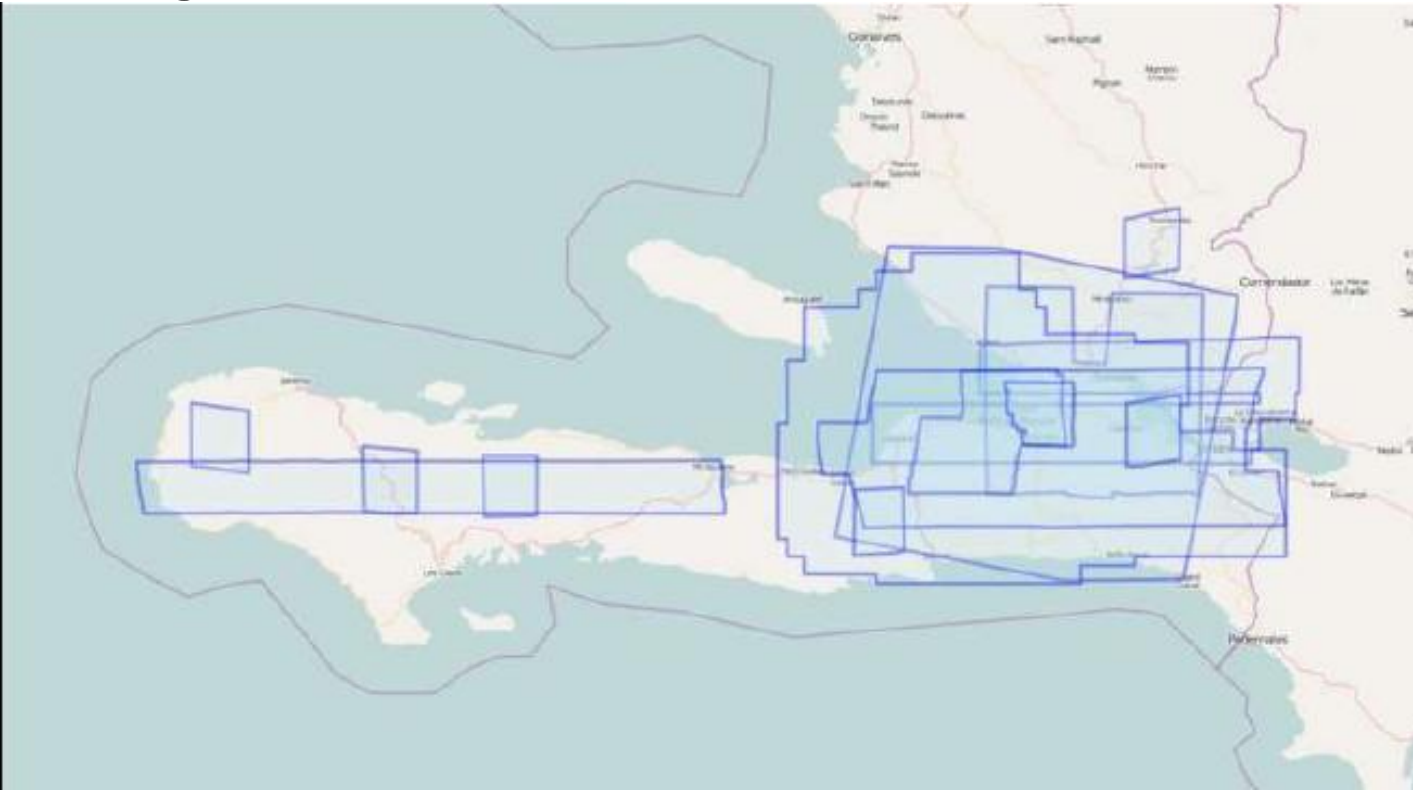
**Présentation des nouveaux outils pour améliorer
la base de données Open Street Map en Haïti.**

Humanitarian Open Street Map Team (HOT)

Moine Frederic



Imagerie haute résolution sous licence “attribution only” dans les 48h



Google//GeoEye
DigitalGlobe
World Bank (ImageCAT
GFDRR),
SpotImage
CIA

Raw imagery processed into tiles to be made available in OSM editors (potlatch, merkator & josm)

Hundreds traced 24/7 over base map features, humanitarian features (camps) & also damages

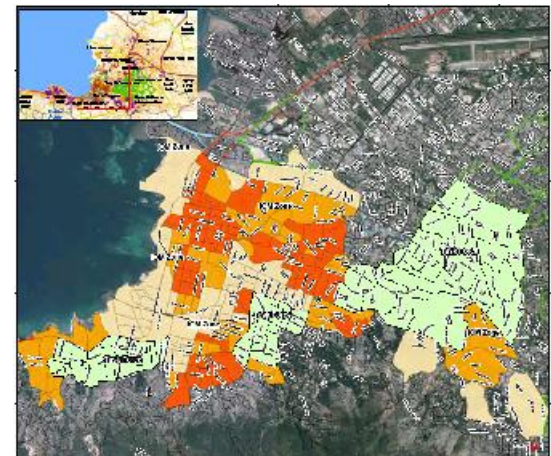
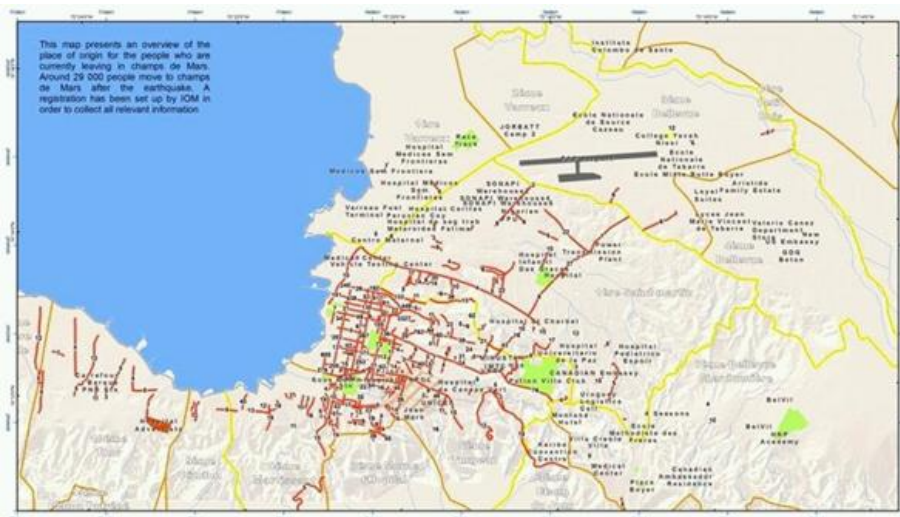
Incentive for sharing restricted vector data sets

Foster quality of field collection activities

Utilisation des données OSM

- Carte de Situation
- Carte de planification
- Carte Thématique
- Carte de risques

Utilisateurs: UN, ONG



Soley Leve



Tap Tap Map

← → ↻ taptapmap.org ☆

Tap Tap Map | [Add New Routes!](#) | [Learn OpenStreetMap](#) | [Get Project Updates](#)



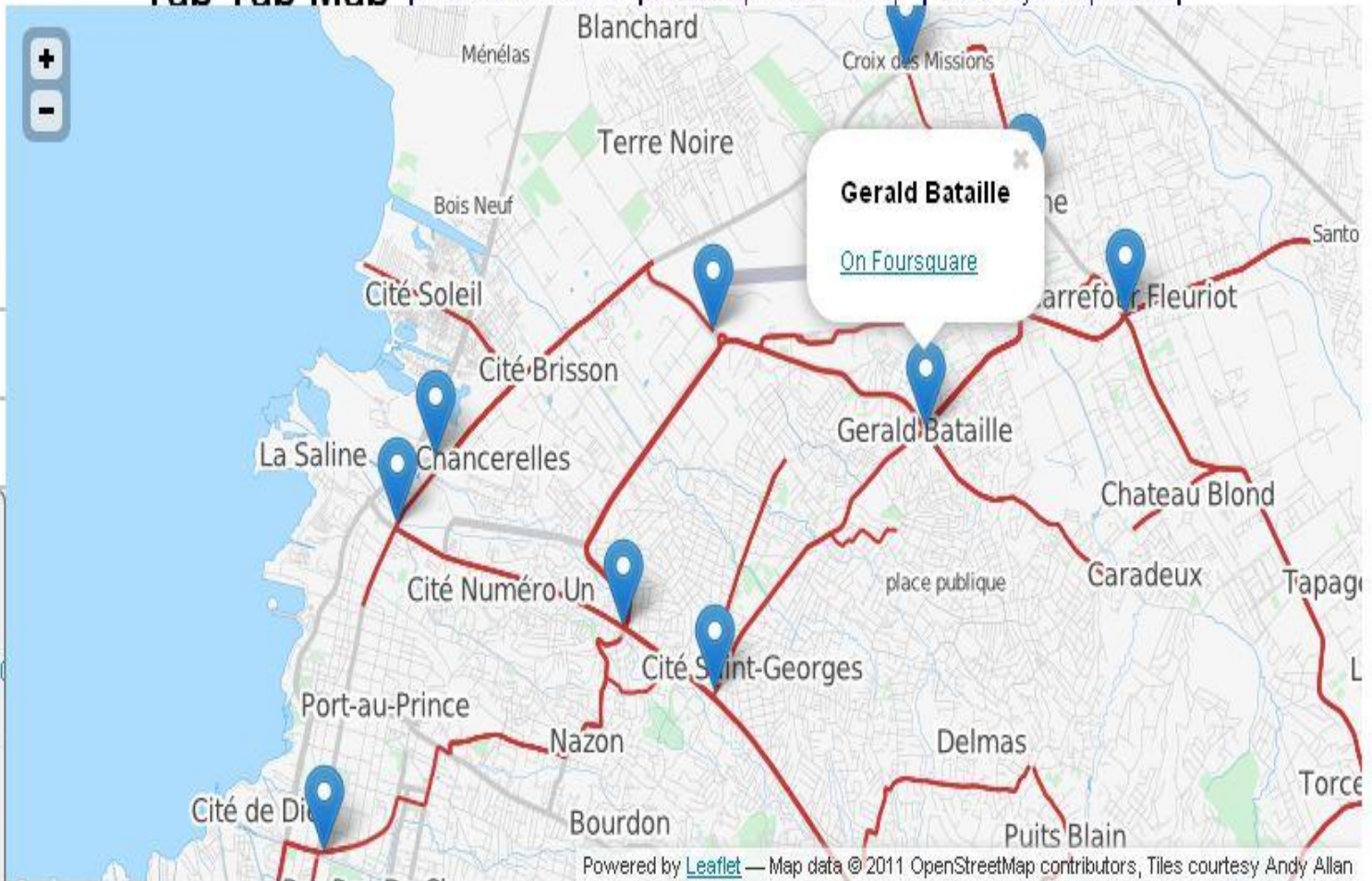
[What are Tap Taps?](#)

[Travel Tips](#)

[Destinations](#)

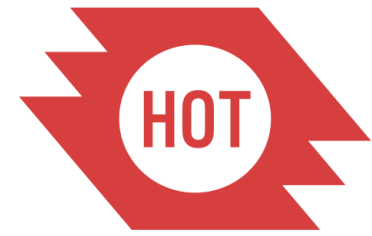
TapTapMap Don't Crimp My Ride! Kenya to kill 14-seater matatus; quashing vital service+cultural treasure. Massive general strike? latitude.blogs.nytimes.com/2011/06/06/kenya-to-kill-14-seater-matatus-quashing-vital-service-cultural-treasure-massive-general-strike/ 60 days ago · reply · retweet · favorite

mapmeld Thanks for the shoutout to @TapTapMap! " @mikel: Only Possible with Open Data. New blog post:



Powered by [Leaflet](#) — Map data © 2011 OpenStreetMap contributors, Tiles courtesy Andy Allan

Développement d'outils



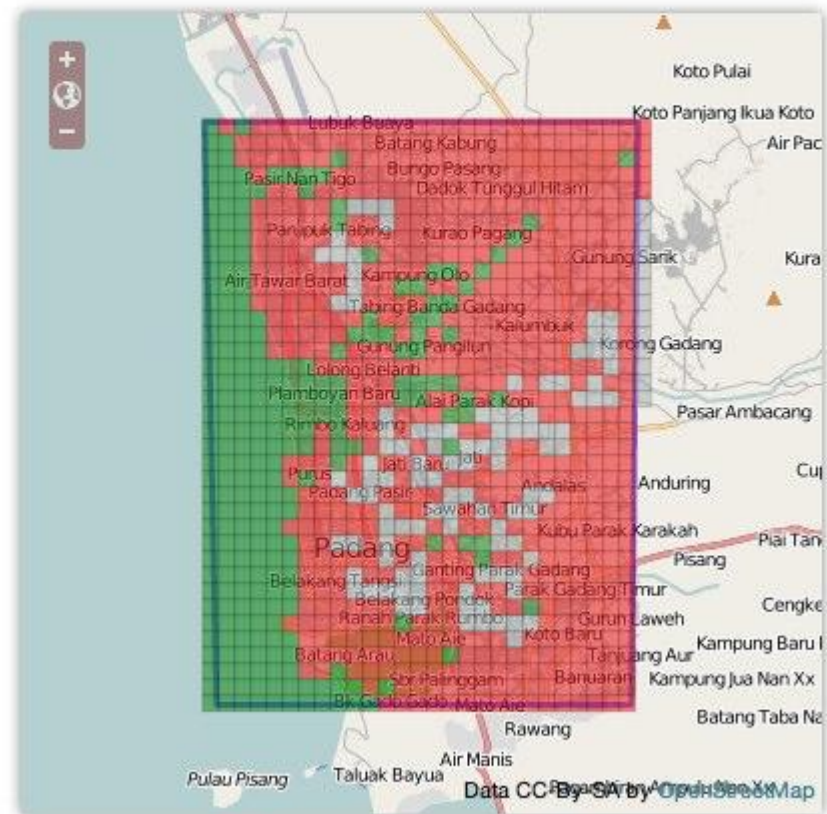
OSM Tasking Manager

You are wonderchook

Help Map for a Safer Padang

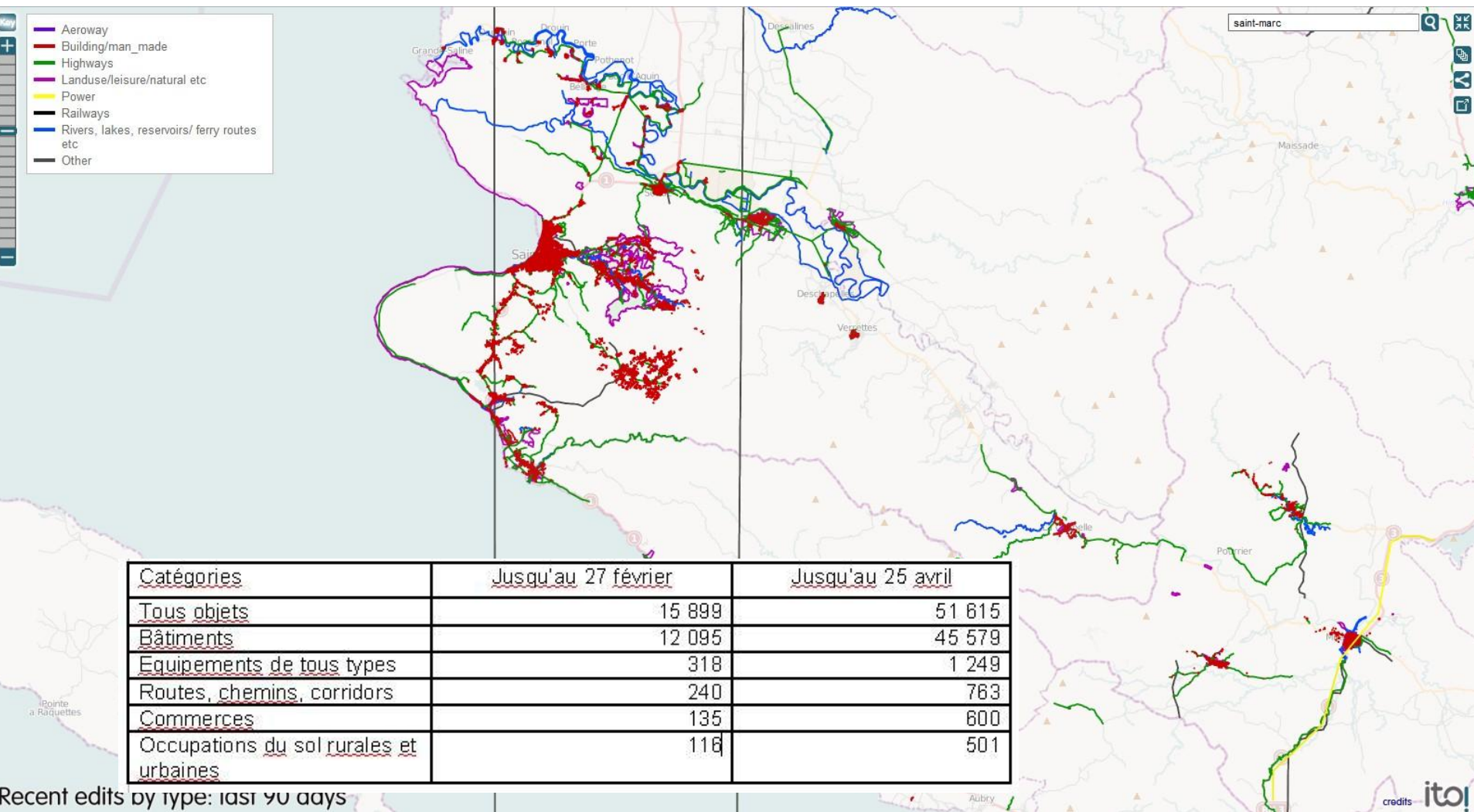
Description Workflow Task Users Stats

What and Why?



HOT/COSMHA-USAID projet STM020 – St Marc

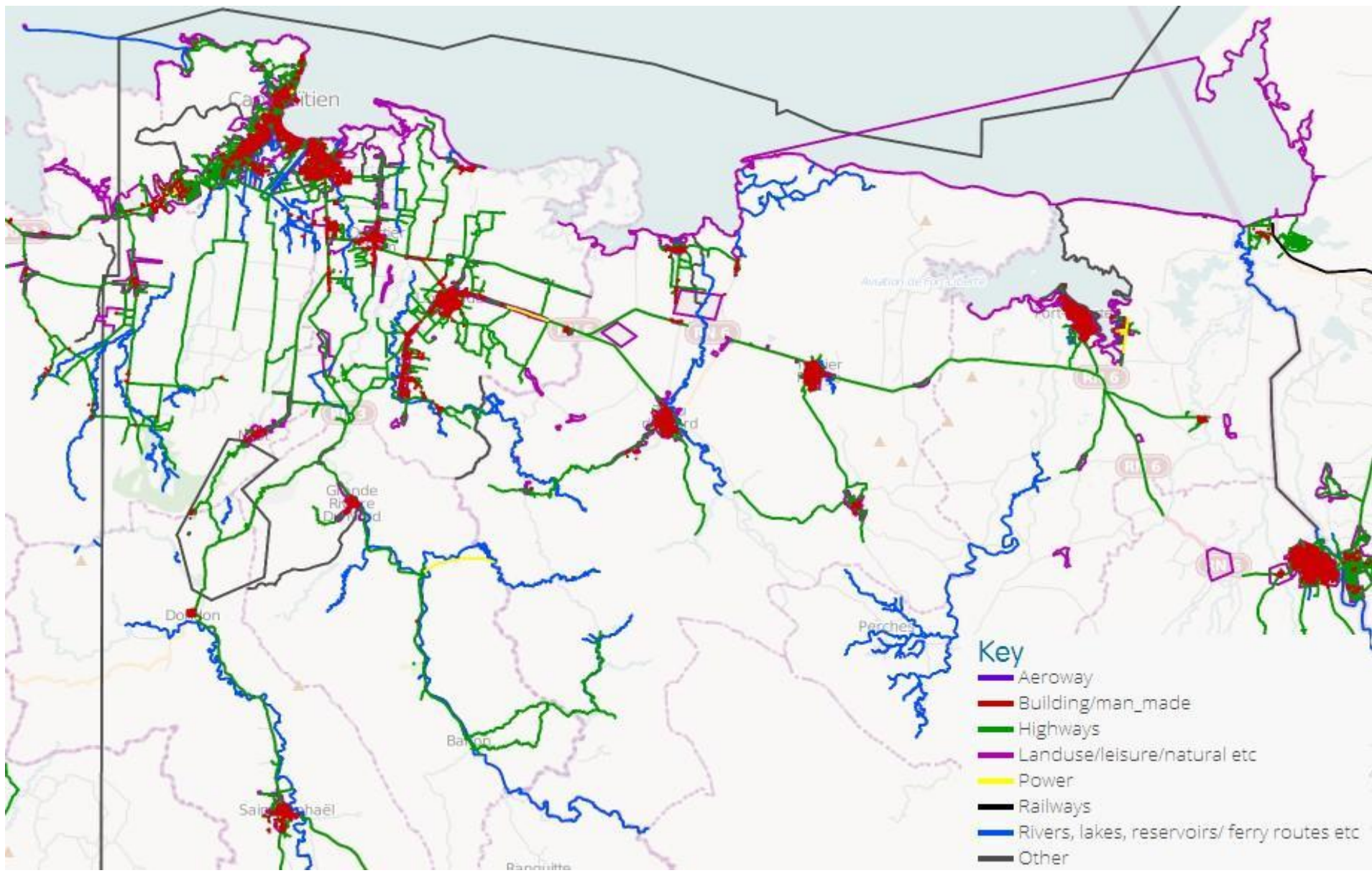
Carte de base/ formation et renforcement des capacités



HOT-USAID projet CAP103 – Nord Haiti

Carte de base/ formation et renforcement des capacités

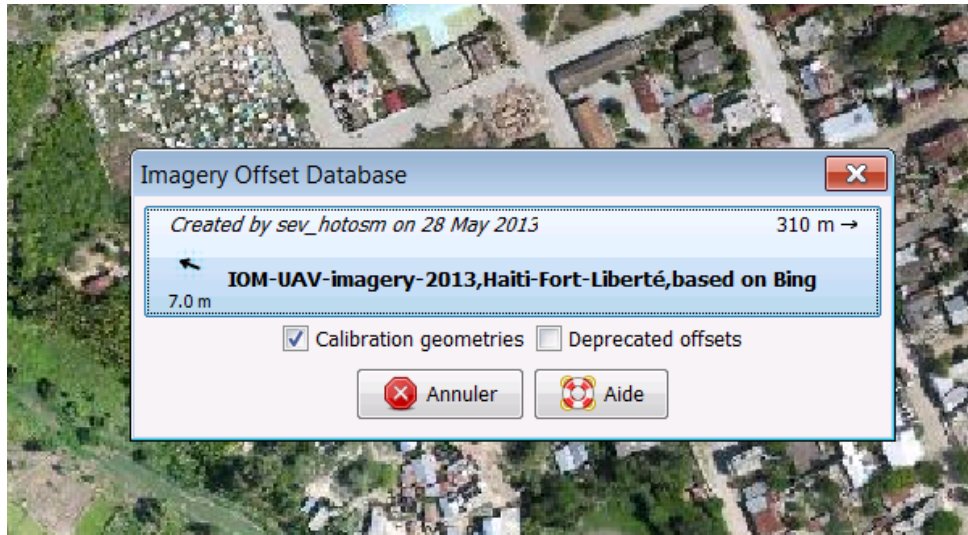
Carte des contributions (11 mars- 6 mai 2013)



Imagerie

1. Gestion Image satellite dans JOSM (Editeur Java pour Open Street Map:

- Utilisation de offset Manager et remplacement de l'image à la volée suivant des points GPS différentiels ou traces GPS connus.



2. Vidéo mission UAV en Haiti Avril 2013 <http://youtu.be/rXR2m8Kuhsg>

<http://osm.arkemie.org/haiti/?zoom=12&lat=18.57408&lon=-72.26574&layers=0B0000FTFTFF>

- Step 3: UAV flight

With a swinglet cam de Sensefly



- 1- Image post processing (mosaic)
- 2- Analysis of aerial images before and after the disaster.
- 3- - Digitize polygons houses and classification of damage (destroyed houses, damaged houses).



SANDY STORM RESPOND PART 4 BUILDINGS ASSESSMENT ON RIVIERE GRISE



Comments:

Building Assessment	
■	Destroyed
■	Damaged
■	Building not affected



The boundaries and names and the geographical data in this map do not imply official endorsement or approval by IGN.

All information is the best available at the time the map was produced. Update should be sent to the IGN IGN IGN.

Projections & Grid information
Reference Grid: UTM Zone 18 N
Datum: WGS 84
Projection: UTM Zone 18 N
Datum: WGS 84
Scale: 1:3,400

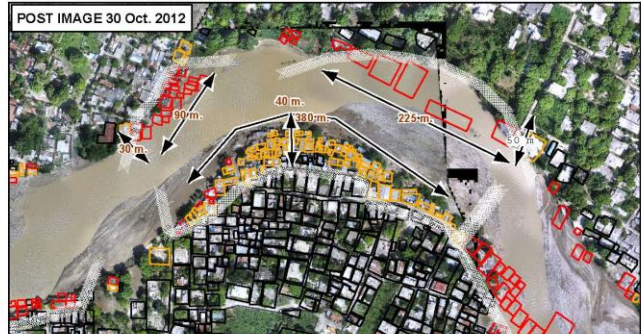
Geographic Grid
Geographic (GMS)
WGS 84
WGS 84

SANDY STORM RESPOND PART 5 BUILDINGS ASSESSMENT ON RIVIERE GRISE



Comments:

Building Assessment	
■	Destroyed
■	Damaged
■	Building not affected



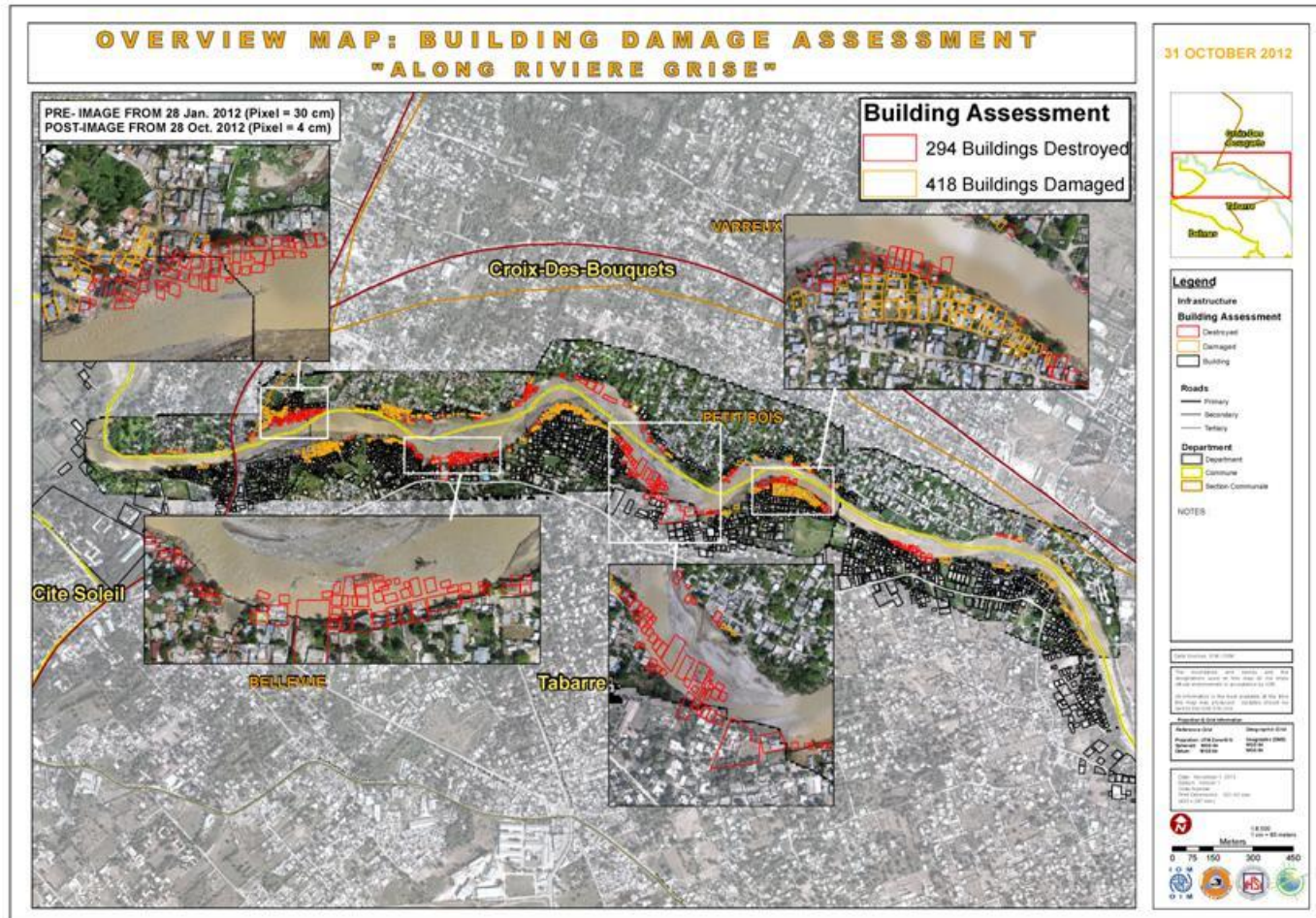
The boundaries and names and the geographical data in this map do not imply official endorsement or approval by IGN.

All information is the best available at the time the map was produced. Update should be sent to the IGN IGN IGN.

Projections & Grid information
Reference Grid: UTM Zone 18 N
Datum: WGS 84
Projection: UTM Zone 18 N
Datum: WGS 84
Scale: 1:3,600

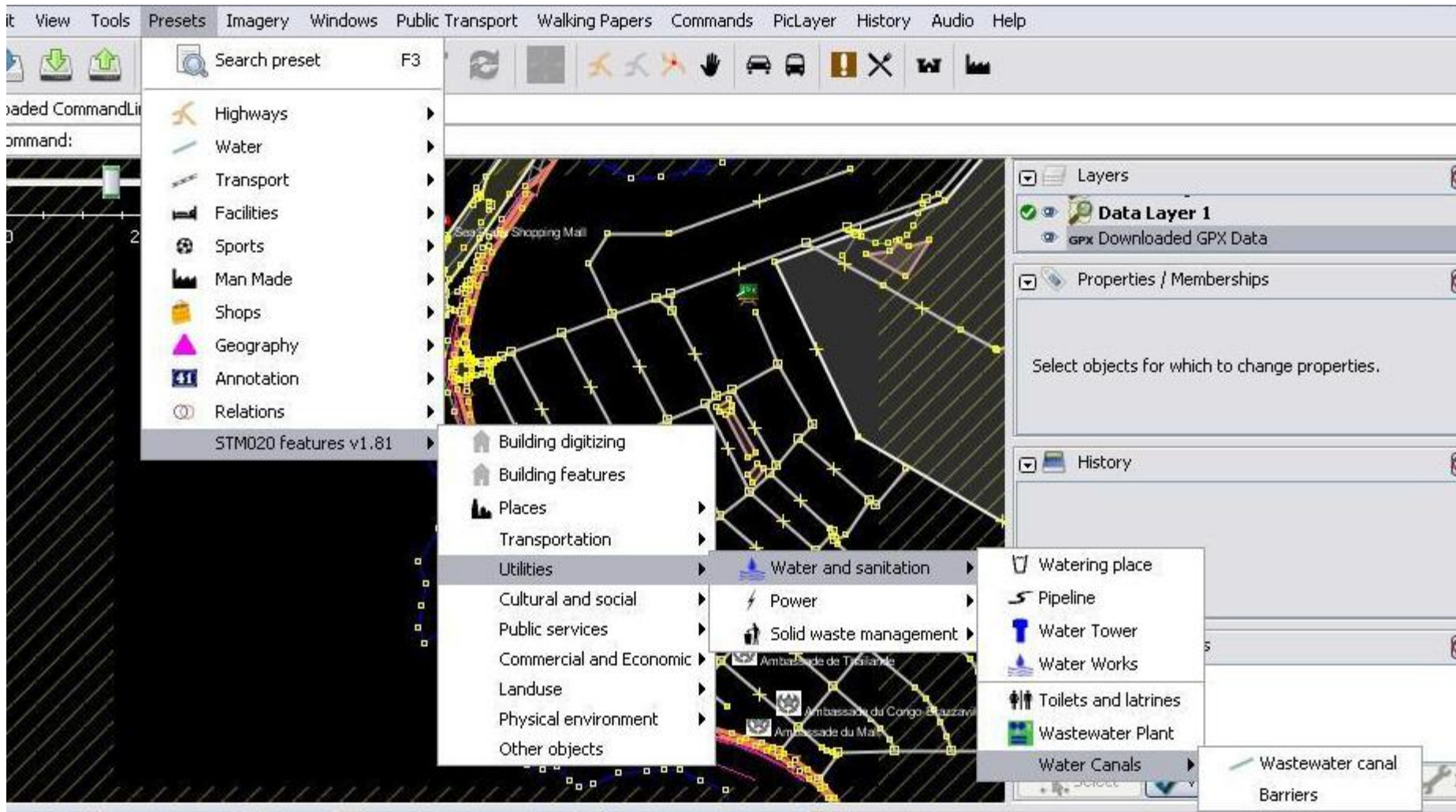
Geographic Grid
Geographic (GMS)
WGS 84
WGS 84

Damage assessment with UAV

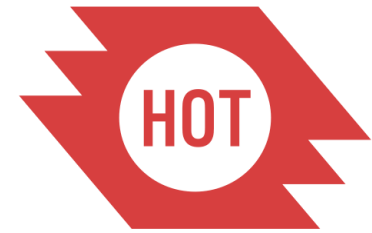


Matériaux de soutien

Masque de saisie (Balises/ Preset) - JOSM



Développement d'outils



HOT Exports

About HOT Exports Tool

This platform allows you to create custom OpenStreetMap exports for various regions (at the moment only Haiti is supported). You can specify an area of interest and a list of features (OpenStreetMap tags) for the export. A current OpenStreetMap data extract for that area in various data formats is then created for you within minutes.

Create a new job

Click on [New Job](#) in the top navigation bar to run the new job wizard. Enter the name and a description for the new job, so that you (and others) can easily identify it later. Then choose the region you are interested in (currently must be a box). In the last step, you can upload a JOSM preset file with your tags. If you don't upload any tags, only default tags are used for this job.

Fetch your export

After you created a job, the job is run for you in the background and a detail page is shown for the job. The detail page has information on all previous runs of this job - initially the list will be empty. The page refreshes automatically, and after a few minutes you will see a number of files in different formats ready for download.

Re-run a job

Choose [All Jobs](#) at the top navigation. Look for the job you want to re-run by its name. A filter helps you to reduce the number of jobs in the list. Then click on your job to get to the detail page again, and click on the "Start new run" button. A new run is started in the background, and again, the download files will be available after a short wait.

Edit a job

You can create a new job on the basis of an existing job with the "Create Job" button that is shown at the bottom of a job's detail page. This button gets you to the "new job" wizard where you can specify a different geometry, but the uploaded tags will be re-used from the existing job.



Mapping à distance imagerie & Walking Paper

Walikale (IFRC), Gulu and Lira (US Red Cross)

OSM Tasking Manager

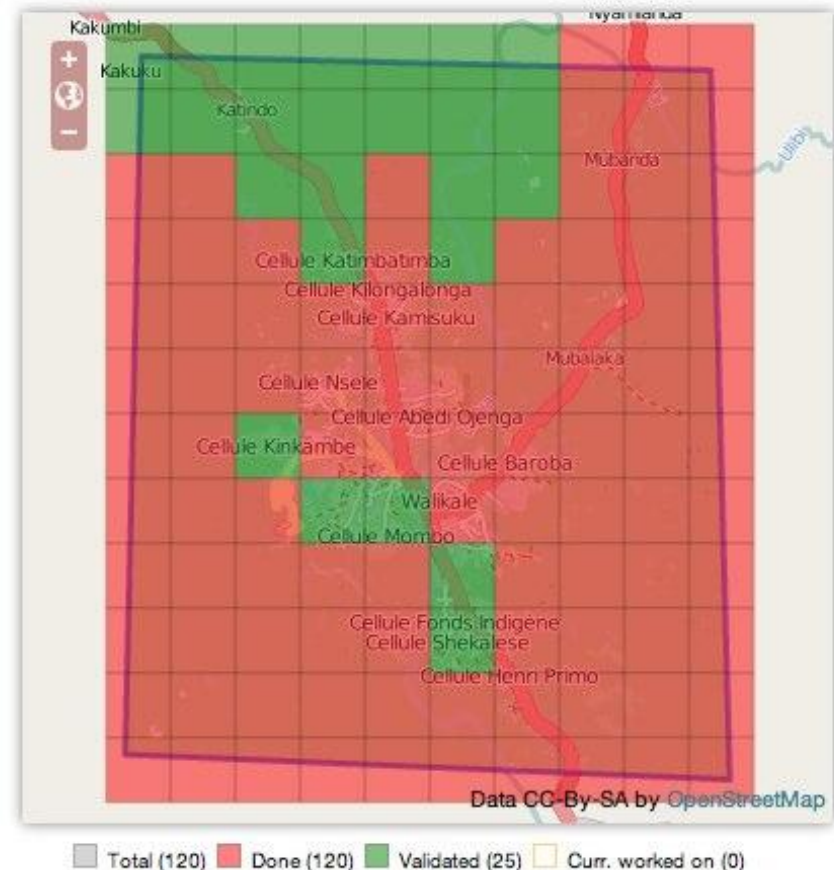
You are wonderchook

Walikale DRC - DigitalGlobe imagery - Landuse and buildings (DONE)

Description Workflow Task Users Stats

What and Why?

Following [Walikale project on roads](#) : the aim is now to digitize **landuse and buildings**. Smaller tiles are therefore used.





Object Properties

[Edit](#)

Nomor Kartu Keluarga <i>(Family Card Number)</i>	
Nomor Induk Keluarga <i>(Family Identity Number)</i>	
Nomor Akta Kelahiran <i>(Birth Certificate Number)</i>	
Nomor KTP <i>(ID Card Number)</i>	
Kepala Keluarga <i>(Kepala Keluarga)</i>	
Umur <i>(Age)</i>	
Golongan Darah <i>(Blood Type)</i>	
Umur <i>(Age)</i>	
Penyakit kronis yang pernah diderita <i>(Chronic Disease)</i>	

Project

Informasi Dompu
 Last modified: 2011-12-21
 By:
 dedy_bima1974@yahoo.com
 dedy_bima1974@yahoo.com
 Version: 1
[Change project](#)

OSM Properties

OSM ID: 124468422
 OSM Type: way



<https://github.com/geofabrik/sds-server>



Contrôle qualité

- **Valdateur dans JOSM – OpenStreetMap**
- **Vérification de terrain**
- **OSMOSE**

Change language ▾ Errors by user Relation analyser CLC openstreetmap.fr Statistics Help ▾ Delay 11.35s

Severity 1 only
Select: [all](#) [nothing](#) [invert](#)

Structure 20/20 all nothing

- overlapping building
- invalid polygon
- reverse roundabout
- orphan nodes
- sudden highway type change
- bad * link highway
- broken highway continuity
- big relation
- multipolygon
- not-connected highway/cycleway

Missing tags 7/7 all nothing

- junction=roundabout
- oneway=...
- highway=...

Bad tag 20/20 all nothing

- bad source tag
- multiple tags
- incorrect tag
- bad tag key
- typo in tag

Tags to remove 9/9 all nothing

- incompatible tags
- ref in name
- -

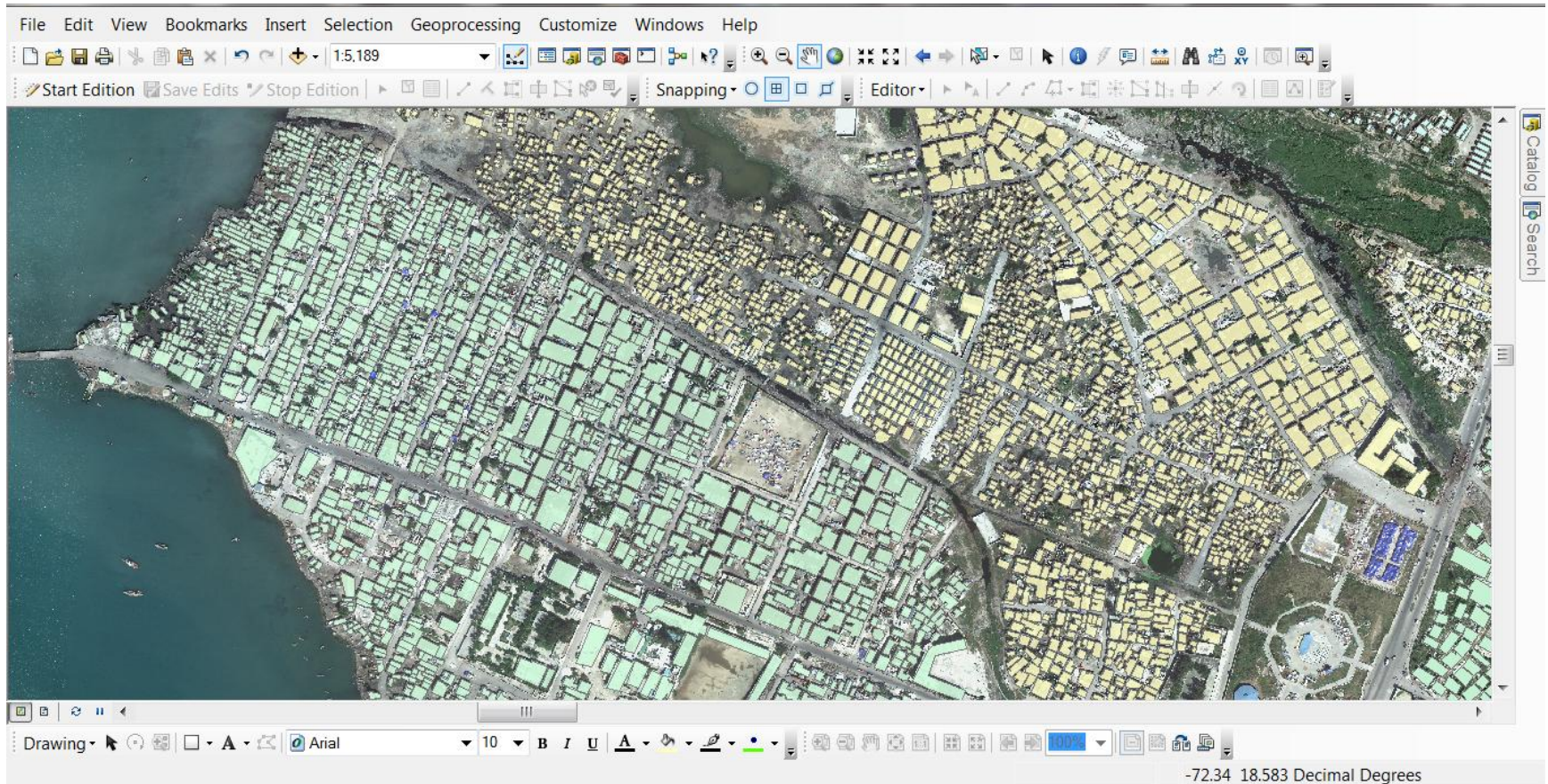
© les contributeurs d'OpenStreetMap

-0.05718, 45.75045

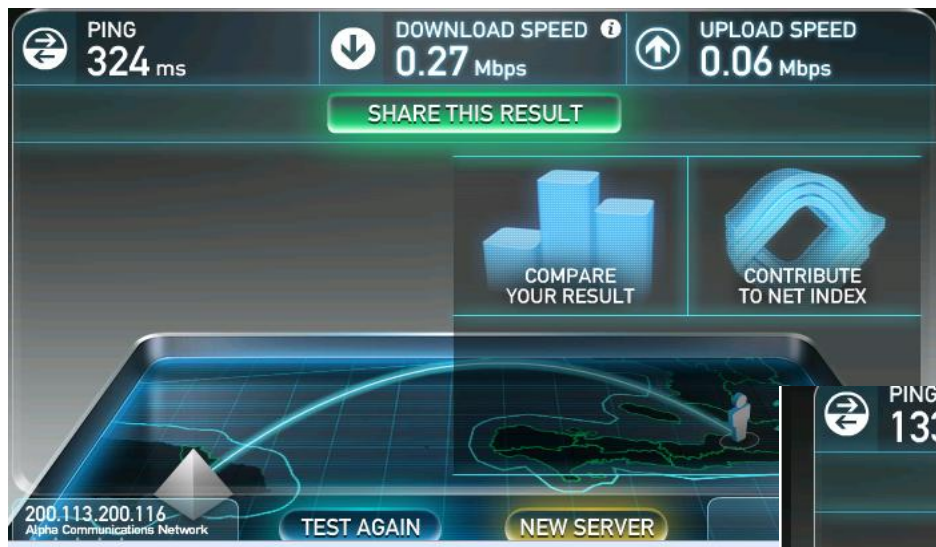
Conclusions / perspectives

- Accès aux images pléiades
- Échanges méthodologiques avec les partenaires Kal-Haïti

Integration des donnees IOM dans Open Street Map

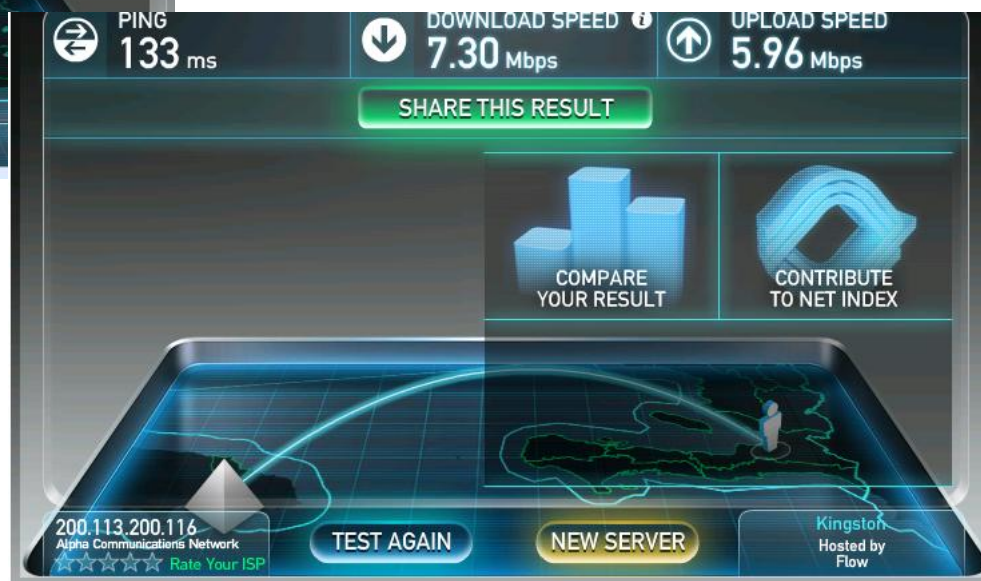


Connexion Internet



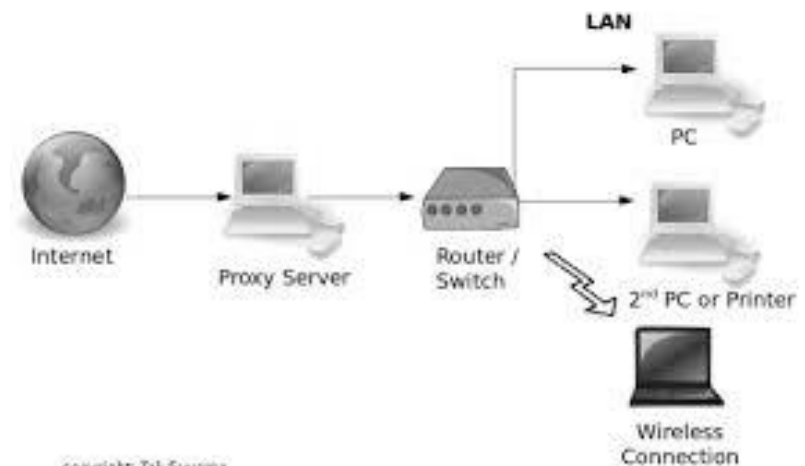
← Durant la journée à l'université Limonade

Départ des Etudiants →



Utilisation

- Mise en place d'un serveur proxy (mise en cache des images).
- Partage des images via le protocole WMS, et mise à dispositions des images sous JOSM.



copyright: Tai Suyama

